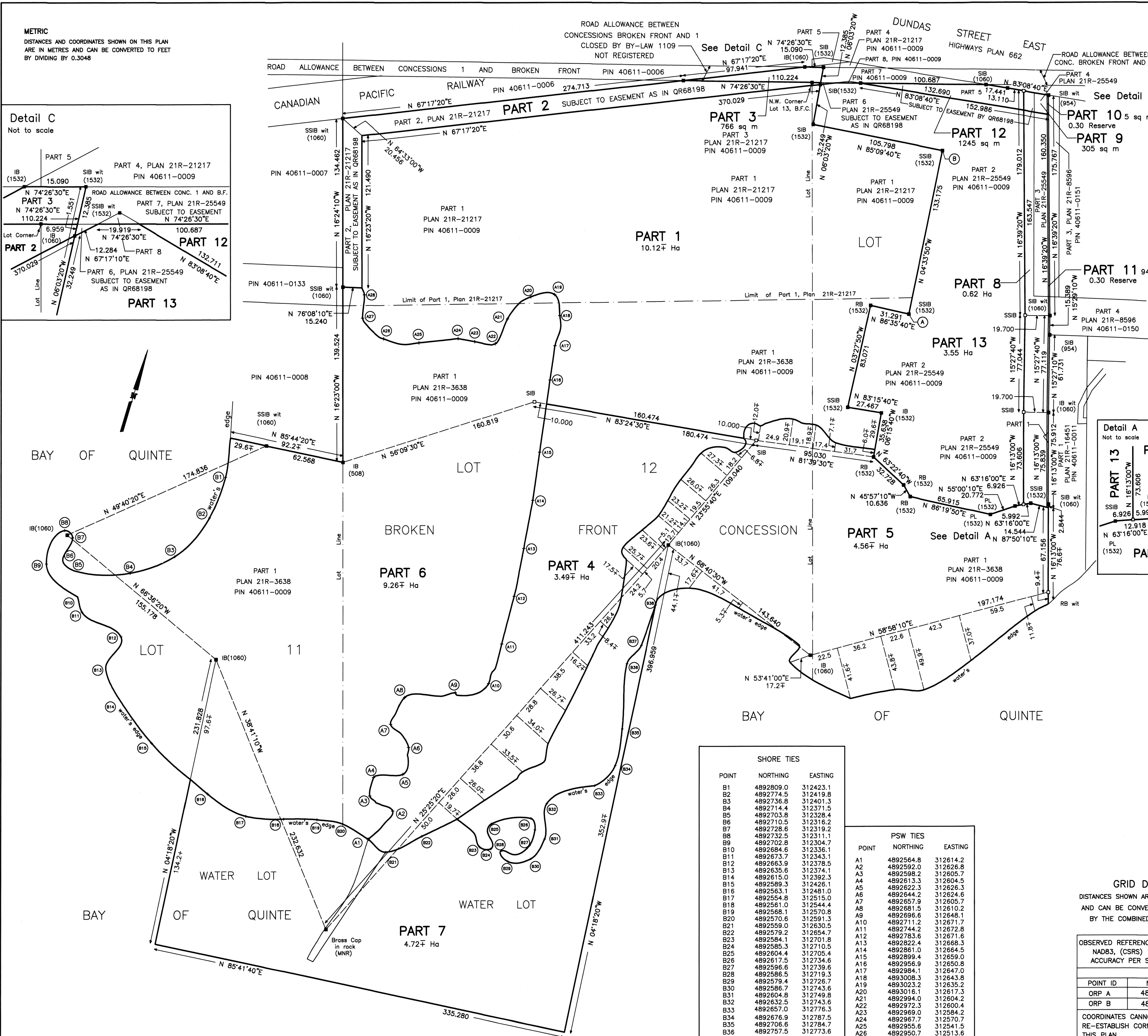
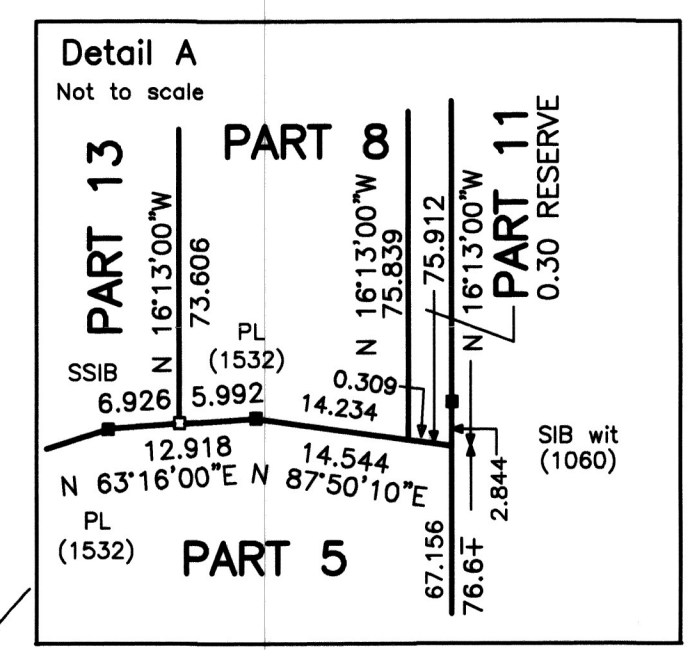
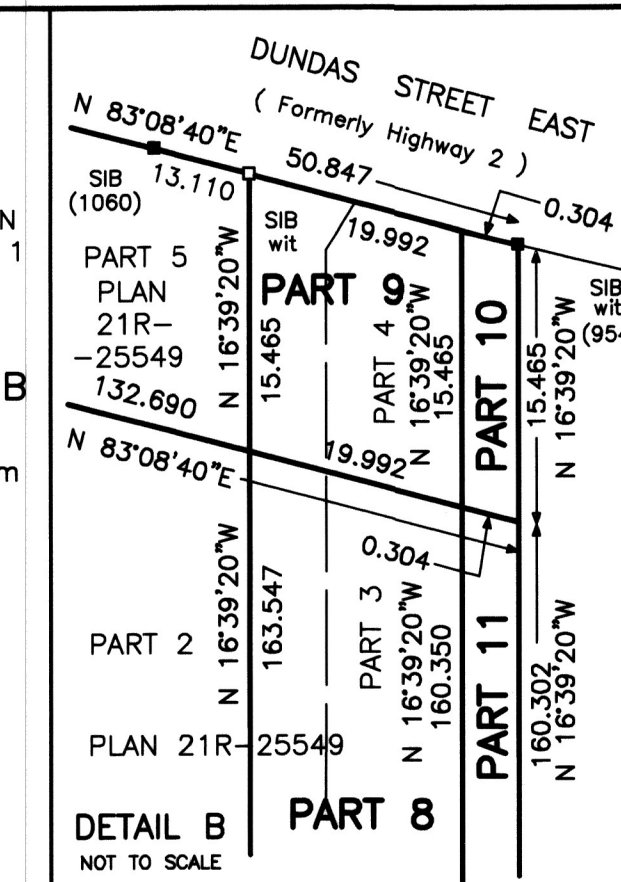
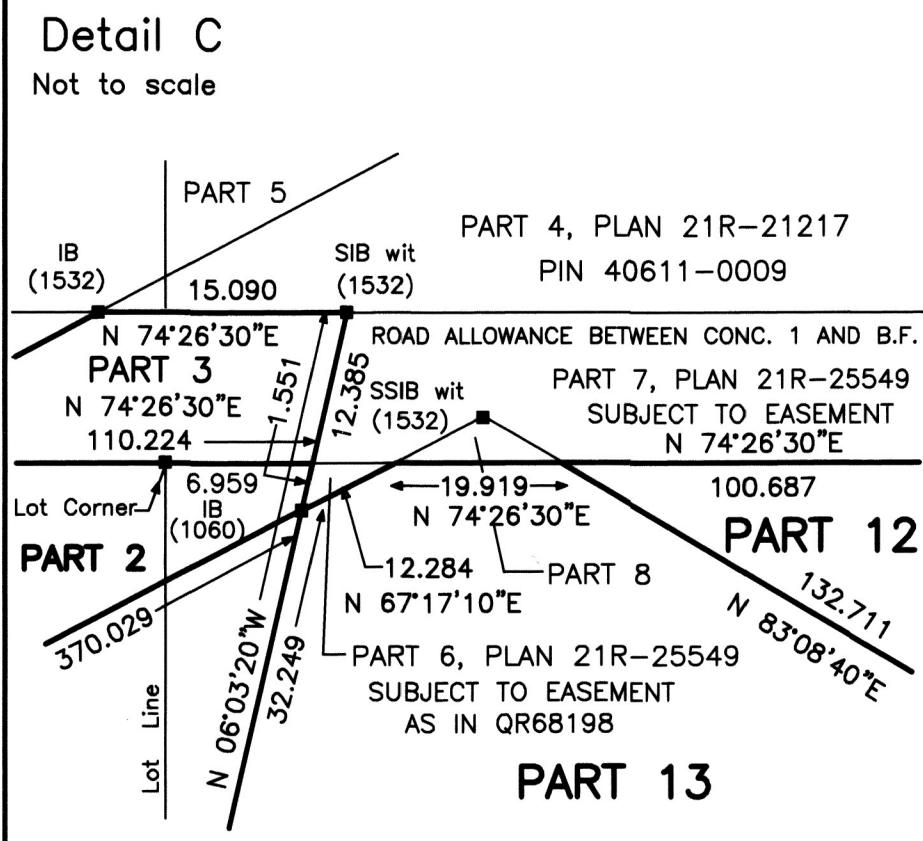


METRIC  
DISTANCES AND COORDINATES SHOWN ON THIS PLAN  
ARE IN METRES AND CAN BE CONVERTED TO FEET  
BY DIVIDING BY 0.3048



I require this plan to be deposited under The Land Titles Act  
Date December 28, 2022  
Steven Gifford  
Steven Gifford  
Ontario Land Surveyor

PLAN 21R 26311  
Received and deposited  
Date December 29, 2022  
Uma Purdy  
Representative for the Land Registrar for the Land Titles Division of Hastings (21)

SCHEDULE			
PART	LOT/ROAD	CONCESSION	PIN
1	PART OF LOTS 12 AND 13	BROKEN FRONT	40611-0009
2	PART OF LOTS 12 AND 13		
3	PART OF THE ROAD ALLOWANCE BETWEEN CONCESSIONS 1 AND BROKEN FRONT		
4	PART OF LOT 12		
5	PART OF LOTS 12 AND 13	BROKEN FRONT	
6	PART OF LOTS 11 AND 12		
7	WATER LOT		
8			
9			
10			
11	PART OF LOT 13	BROKEN FRONT	
12			
13			

PARTS 1 THROUGH 13 ARE PART OF PIN 40611-0009.  
PARTS 2, 3, 9, 10 & 12 ARE SUBJECT TO EASEMENT AS IN QR68198.

PLAN OF SURVEY OF  
PART OF LOTS 11, 12 AND 13 AND THE  
WATER LOT LYING IN FRONT OF  
LOTS 11 AND 12  
BROKEN FRONT CONCESSION AND  
PART OF THE ROAD ALLOWANCE BETWEEN  
CONCESSIONS BROKEN FRONT AND 1  
GEOGRAPHIC TOWNSHIP OF THURLLOW  
CITY OF BELLEVILLE  
COUNTY OF HASTINGS  
GIFFORD, HARRIS SURVEYING LTD.  
ONTARIO LAND SURVEYORS  
SCALE 1 : 1500

GRID BEARING NOTE  
BEARINGS SHOWN HEREON ARE UTM GRID DERIVED FROM OBSERVED REFERENCE POINTS A AND B BY REAL TIME NETWORK OBSERVATIONS UTM ZONE 18, NAD83 (CSRS)

LEGEND  
SSIB denotes 2.5 cm sq. x 60 cm iron bar  
SIB .. 2.5 cm sq. x 120 cm iron bar  
IB .. 1.6 cm sq. x 60 cm iron bar  
□ .. Survey monument planted  
■ .. Survey monument found  
wit .. witness monument  
meas .. measured  
RB .. rock bar  
PB .. plastic bar

SURVEYOR'S CERTIFICATE  
I certify that:  
1. This survey and plan are correct and in accordance with THE SURVEY ACT, THE SURVEYOR'S ACT, THE LAND TITLES ACT and the regulations made under them.  
2. The survey was completed on December 16, 2022.  
December 28, 2022 Steven Gifford  
date Steven Gifford  
Ontario Land Surveyor

THIS PLAN OF SURVEY RELATES TO AOLS  
PLAN SUBMISSION FORM 2198859.  
**GIFFORD, HARRIS SURVEYING LTD.**  
ONTARIO LAND SURVEYORS  
255 GLEN MILLER ROAD 613-392-2177  
UNIT 1, TRENTON, ONTARIO K8V 5P8  
CAMPBELLFORD & COBOURG TOLL FREE 1-877-394-6646

SHORE TIES		
POINT	NORTHING	EASTING
B1	4892809.0	312423.1
B2	4892774.5	312419.8
B3	4892736.8	312401.3
B4	4892714.4	312371.5
B5	4892703.8	312328.4
B6	4892710.5	312316.2
B7	4892728.6	312319.2
B8	4892732.5	312311.1
B9	4892702.8	312304.7
B10	4892884.6	312336.1
B11	4892673.7	312343.1
B12	4892663.9	312378.5
B13	4892635.6	312374.1
B14	4892615.0	312392.3
B15	4892589.3	312426.1
B16	4892563.1	312481.0
B17	4892554.8	312515.0
B18	4892561.0	312544.4
B19	4892568.1	312570.8
B20	4892570.6	312591.3
B21	4892559.0	312630.5
B22	4892579.2	312654.7
B23	4892584.1	312701.8
B24	4892585.3	312710.5
B25	4892604.4	312705.4
B26	4892617.5	312734.6
B27	4892596.6	312739.6
B28	4892586.5	312719.3
B29	4892579.4	312726.7
B30	4892586.7	312743.6
B31	4892604.8	312749.8
B32	4892632.5	312743.6
B33	4892657.0	312776.3
B34	4892676.9	312787.5
B35	4892706.6	312784.7
B36	4892757.5	312773.6
B37	4892775.0	312780.4
B38	4892808.9	312782.3

PSW TIES		
POINT	NORTHING	EASTING
A1	4892564.8	312614.2
A2	4892592.0	312626.8
A3	4892598.2	312605.7
A4	4892613.3	312604.5
A5	4892622.3	312626.3
A6	4892644.2	312624.6
A7	4892657.9	312605.7
A8	4892681.5	312610.2
A9	4892696.6	312648.1
A10	4892711.2	312671.7
A11	4892744.2	312672.8
A12	4892783.6	312671.6
A13	4892822.4	312668.3
A14	4892861.0	312684.5
A15	4892899.4	312659.0
A16	4892956.9	312650.8
A17	4892984.1	312647.0
A18	4893008.3	312643.8
A19	4893023.2	312635.2
A20	4893016.1	312617.3
A21	4892994.0	312604.2
A22	4892972.3	312600.4
A23	4892969.0	312584.2
A24	4892967.7	312570.7
A25	4892955.6	312541.5
A26	4892950.7	312513.6
A27	4892961.7	312492.7
A28	4892979.9	312488.9

GRID DISTANCE NOTE  
DISTANCES SHOWN ARE ADJUSTED GROUND DISTANCES  
AND CAN BE CONVERTED TO GRID BY MULTIPLYING  
BY THE COMBINED SCALE FACTOR 1.000135.

OBSERVED REFERENCE POINTS (ORP'S): UTM ZONE 18  
NAD83, (CSRS) 1997, COORDINATES TO RURAL  
ACCURACY PER SEC. 14(2) OF O. REG. 216/10

COORDINATES		
POINT ID	NORTHING	EASTING
ORP A	4893088.15	312911.97
ORP B	4893220.90	312901.37

COORDINATES CANNOT, IN THEMSELVES, BE USED TO RE-ESTABLISH CORNERS OR BOUNDARIES SHOWN ON THIS PLAN.